



CT2040

Compact Tractor

The CT2040 40-hp compact tractor fits in tight spaces without sacrificing the power to do heavy-duty attachment and implement work.

- Category 1 three-point hitch for using implements
- Manual-shift or hydrostatic transmission options
- Integrated loader joystick lever for intuitive controls and easier front-end loader work
- Standard rear PTO and optional mid-PTO

STARTING AT

\$25,142* USD - Manual Transmission

\$26,820* USD - Hydrostatic Transmission

Free Front-End Loader*

OR

FINANCE

\$299/month* USD - Manual Transmission

\$319/month* USD - Hydrostatic Transmission

0% for 84 months*

[Search Inventory](#)

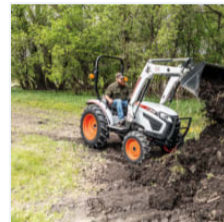
[Build & Quote](#)

[Contact Dealer](#)

[View Offers](#)

[Find Dealer](#)

[Download Brochure](#)



CT2040 Overview

- With the most horsepower in the 2000 platform lineup, the CT2040 small farm tractor packs the punch you need and provides the comfort you want for attachment and implement work on your acreage.
- This compact tractor's Category 1 three-point hitch allows you to take on heavy-duty implement work.
- With manual-shift or hydrostatic transmission options, you can customize this tractor to fit your needs.
- Do more with one machine. Whether it's digging, hauling, clearing, mowing or maintaining driveways, this hard-working tractor has you covered to make the most of your land.

CT2040 Specs & Compare

CT2040 MST

CT2040 HST

CT2040 Key Specifications

Horsepower	39.6 hp	39.6 hp
Lift Capacity at 24" behind Lift Point	1,631 lb	1,631 lb
PTO HP	34.9 hp	31.9 hp
Transmission Type	Manual (9x3)	Infinite, 3 Range Hydrostatic
Width	63.4 in	63.4 in
Turning Radius	8' 0"	8' 0"
Wheelbase	5' 5"	5' 5"

Engine

Emissions Tier (EPA)	Tier 4	Tier 4
Horsepower	39.6 hp	39.6 hp
Displacement	111 in ³	111 in ³
Number of Cylinders	3	3
Gross HP	39.6 hp	39.6 hp
Engine Model	3F-TM(H)4	3F-TM(H)4

Performance

Operating Weight	3,005 lb	3,005 lb
Travel Speed	14.1 mph	14 mph
Travel Speed - Reverse	9.3 mph	12.5 mph
3-Point Hitch	Category 1	Category 1
3-pt Lift Control Type	Hydraulic Position Control System	Hydraulic Position Control System
Lift Capacity at 24" behind Lift Point	1,631 lb	1,631 lb
Rear PTO System	Live	Live
Rear PTO - RPM	540	540
PTO HP	34.9 hp	31.9 hp
Mid PTO - RPM	1988	1988

Capacities

Fuel Tank	9 gal	9 gal
-----------	-------	-------

Hydraulic System

Implement Hydraulic Flow	6.9 gal/min	6.9 gal/min
Total Hydraulic Flow	11.4 gal/min	11.4 gal/min
Steering Hydraulic Flow	4.5 gal/min	4.5 gal/min

Drive System ▲

Brake Type	Wet Multi Disc	Wet Multi Disc
Transmission Type	Manual (9x3)	Infinite, 3 Range Hydrostatic

Dimension ▲

Length	120.9 in	120.9 in
Width	63.4 in	63.4 in
Height	91.5 in	91.5 in
Ground Clearance	11.5 in	11.5 in
Turning Radius	8' 0"	8' 0"
Wheelbase	5' 5"	5' 5"
Front Tire Size	Front Industrial (AG, Turf) 25X8.5-14 (7-16, 27X8.5-15)	Front Industrial (AG, Turf) 25X8.5-14 (7-16, 27X8.5-15)
Rear Tire Size	Rear Industrial (AG, Turf) 15-19.5 (11.2-24, 41X14-20)	Rear Industrial (AG, Turf) 15-19.5 (11.2-24, 41X14-20)

Loader Attachment ▲

Loader Lift Height	8' 4"	8' 4"
Lift Capacity at Bucket Pivot	1,389 lb	1,389 lb
Bucket Width	5' 0"	5' 0"