

# CT5545

## Compact Tractor



Power through the toughest jobs with the CT5545 turbo-charged, 45-hp compact tractor with electronic hydrostatic transmission and enclosed premium cab.

- Power and tilt steering
- Standard rear PTO and PTO cruise
- Standard four-wheel drive
- Category 1 three-point hitch
- Electronic linked pedal option

STARTING AT  
**\$43,559\* USD**

Free Front-End Loader\*

OR

FINANCE  
**\$518/month\* USD**

0% for 84 months\*

[Search Inventory](#)

[Build & Quote](#)

[Contact Dealer](#)

[View Offers](#)

[Find Dealer](#)

[Download Brochure](#)

## CT5545 Overview

- The fully equipped CT5545 compact tractor offers the power needed for big jobs, with its 45-hp, turbo-charged engine, and the comfort to work all day with a premium factory-installed cab featuring power and tilt steering.
- The electronic hydrostatic transmission on the Bobcat CT5545 provides easy direction changes and requires near-effortless pressure on the travel pedal to control your speed. Enhance the ease of operation even more with the electronic linked pedal option, which feels similar to driving a car.
- Standard rear PTO and a Category 1 three-point hitch provide the versatility to use both drag-behind and heavy-duty PTO-powered implements to tackle the most challenging jobs on your property.
- Maintain PTO rpm at the setting you want – even as the tractor's load conditions change – with PTO cruise, and power through the toughest terrain with standard four-wheel drive
- The CT5545 allows you to make the most of your land – clear overgrown pastures, grade roadways, remove snow, plant food plots, trench for utilities and more with this durable and hard-working tractor.

## CT5545 Specs & Compare

[Show less](#)

## CT5545 Features & Benefits

[Expand all](#) ▾

Performance 10 ▾

Uptime-Protection 4 ▾

Comfort 7 ▾

# CT5545 Attachments & Implements

[View All Attachments >](#)



### Angle Blade - 3PT, 72"

The 3-point angle blade pushes or scrapes snow from roads or the middle of parking areas.

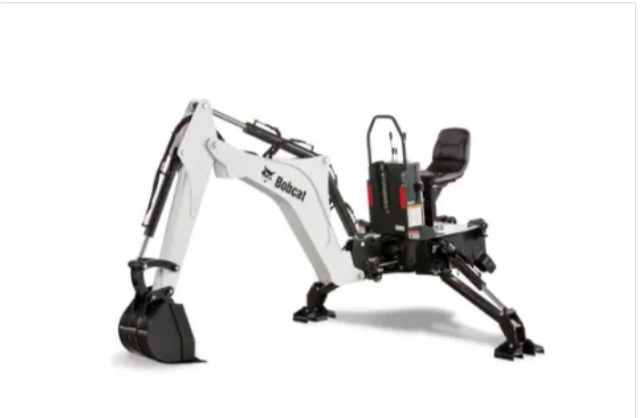
[View Attachment >](#)



### Angle Blade - 3PT, 84"

The 3-point angle blade pushes or scrapes snow from roads or the middle of parking areas.

[View Attachment >](#)



### Backhoe - Compact Tractor, BH86-5

Dig septic tanks or ditches.

[View Attachment >](#)

## Related Models

[View All Compact Tractors >](#)

\*The prices advertised are suggested resale prices that Bobcat recommends to dealers for purposes of trying to ensure that Bobcat's products are price-competitive and that dealers have the proper incentives to market and service the products in accordance with Bobcat's brand standards. Bobcat reserves the right to change suggested resale prices, product specifications, and options at any time. The final sales price is determined independently by the selling dealer in its sole discretion. Pricing is country specific. Bobcat's suggested list prices are for products sold in the US only.

\*Offer ends 12/31/2023. Available at participating and eligible dealers only. Offer may vary by product type, series, model and select units in dealer's current inventory. Must take delivery from dealer stock by 12/31/2023. Offers available on new equipment in US and Canada only. Some restrictions apply. Length of contract and rate may vary. Monthly payment subject to change. Prior purchases not eligible. See dealer for details. Financing provided on approval of credit by authorized Bobcat finance providers to well-qualified buyers. All finance programs and rates are subject to final approval by the applicable Bobcat finance provider and are subject to change at any time without notice. Administrative fees may apply. Offer not available to government accounts, national accounts and municipal/utility bid customers. Bobcat Company reserves the right to extend or discontinue any of these programs at any time without prior notice.



**WARNING:** This product can expose you to chemicals including engine exhaust (including diesel engine exhaust when equipped), lead and lead compounds, mineral oils, soots, phthalates, and carbon monoxide which are known to the State of California to cause cancer and birth defects or other reproductive harm. For more information go to [www.P65Warnings.ca.gov](http://www.P65Warnings.ca.gov).

Certain specification(s) are based on engineering calculations and are not actual measurements. Specification(s) are provided for comparison purposes only and are subject to change without notice. Specification(s) for your individual equipment will vary based on normal variations in design, manufacturing, operating conditions, and other factors.

**One Tough Animal.**

[f](#)
[@](#)
[t](#)
[v](#)
[in](#)
[t](#)

BUYING TOOLS

BUILD & QUOTE

SEARCH INVENTORY

FIND A DEALER

SPECIAL OFFERS

REQUEST A DEMO

CONTACT A DEALER

CONTACT US

CUSTOMER SERVICE

WEBSITE FEEDBACK

DEALER OPPORTUNITIES

GOVERNMENT SALES

FREQUENTLY ASKED QUESTIONS

BUYING RESOURCES

LOADERS

EXCAVATORS

TRACTORS

UTILITY VEHICLES

TELEHANDLERS

TOOLCAT UTILITY WORK MACHINES

ATTACHMENTS

LEGAL

PRIVACY POLICY

TERMS & CONDITIONS

RECALLS

ABOUT US

BRAND

INNOVATION

COMMUNITY

PEOPLE

BOBCAT STORIES

AMBASSADORS

REGION SELECTOR

[NORTH AMERICA \(EN\)](#)

EMAIL SIGN-UP



Bobcat Company is a member of the Doosan Group. Doosan is a global leader in construction, grounds maintenance and material handling equipment, power and water solutions, and engineering that has proudly served customers and communities for more than a century.

Bobcat®, the Bobcat logo, the colors of the Bobcat machine and various other product names referenced on this website are trademarks of Bobcat Company in the United States and various other countries.

