



CT2025

Compact Tractor

This 25-hp compact tractor provides hydrostatic transmission (HST) or manual-shift transmission (MST) options.

- Strong enough for big jobs but small enough to fit into tight areas
- Open workstation with Roll-Over Protective Structure (ROPS)
- Category 1 three-point hitch for using implements
- Integrated loader joystick lever makes front-end loader work easier
- Standard rear PTO/optional mid-PTO

STARTING AT

\$19,023* USD - Manual Transmission

\$20,612* USD - Hydrostatic Transmission

Free Front-End Loader*

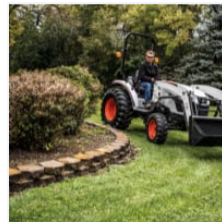
OR

FINANCE

\$226/month* USD - Manual Transmission

\$245/month* USD - Hydrostatic Transmission

0% for 84 months*



[Search Inventory](#)

[Build & Quote](#)

[Contact Dealer](#)

[View Offers](#)

[Find Dealer](#)

[Download Brochure](#)

CT2025 Overview

- Count on rugged performance, power, comfort and all-around versatility for small farms, ranches and acreages with the economical CT2025 compact tractor.
- With standard four-wheel drive, this tractor is ideal for hauling material, digging holes, mowing and using implements.
- Climb on and off the tractor with ease thanks to the open cab.
- Pick the controls that fit your working style. The CT2025 offers options for 3-Range hydrostatic transmission or manual-shift transmission
- The integrated joystick lever is within easy reach and makes the front-end loader respond intuitively to your command.

CT2025 Specs & Compare

	CT2025 HST	CT2025 MST
CT2025 Key Specifications		
Horsepower	24.5 hp	24.5 hp
Lift Capacity at 24" behind Lift Point	1,631 lb	1,631 lb
PTO HP	21.8 hp	22.2 hp
Transmission Type	Infinite, 3 Range Hydrostatic	Manual (9x3)
Width	63.4 in	63.4 in
Turning Radius	8' 0"	8' 0"
Wheelbase	5' 5"	5' 5"
Engine		
Emissions Tier (EPA)	Tier 4	Tier 4
Horsepower	24.5 hp	24.5 hp
Displacement	100 in ³	100 in ³
Number of Cylinders	3	3
Gross HP	24.5 hp	24.5 hp
Engine Model	3A165LWM(H)	3A165LWM(H)
Performance		
Operating Weight	2,634 lb	2,634 lb
Travel Speed	9.5 mph	9 mph
Travel Speed - Reverse	8.5 mph	6 mph
3-Point Hitch	Category 1	Category 1
3-pt Lift Control Type	Hydraulic Position Control System	Hydraulic Position Control System
Lift Capacity at 24" behind Lift Point	1,631 lb	1,631 lb
Rear PTO System	Live	Live
Rear PTO - RPM	540	540
PTO HP	21.8 hp	22.2 hp
Mid PTO - RPM	1976	1976
Capacities		
Fuel Tank	9 gal	9 gal

Hydraulic System		
Implement Hydraulic Flow	6.9 gal/min	6.9 gal/min
Total Hydraulic Flow	11.4 gal/min	11.4 gal/min
Steering Hydraulic Flow	4.5 gal/min	4.5 gal/min

Drive System		
Brake Type	Wet Multi-Disc	Wet Multi-Disc
Transmission Type	Infinite, 3 Range Hydrostatic	Manual (9x3)

Dimension		
Length	120.9 in	120.9 in
Width	63.4 in	63.4 in
Height	91.5 in	91.5 in
Ground Clearance	11.5 in	11.5 in
Turning Radius	8' 0"	8' 0"
Wheelbase	5' 5"	5' 5"
Front Tire Size	Front Industrial (AG, Turf) 25X8.5-14 (7-16, 27X8.5-15)	Front Industrial (AG, Turf) 25X8.5-14 (7-16, 27X8.5-15)
Rear Tire Size	Rear Industrial (AG, Turf) 15-19.5 (11.2-24, 41X14-20)	Rear Industrial (AG, Turf) 15-19.5 (11.2-24, 41X14-20)

Loader Attachment		
Loader Lift Height	7' 10"	7' 10"
Lift Capacity at Bucket Pivot	1,369 lb	1,369 lb
Bucket Width	5' 0"	5' 0"

CT2025 Features & Benefits

Expand all

Performance 10

Comfort 4

Uptime Protection 3

Versatility 1

Serviceability 3

*The prices advertised are suggested resale prices that Bobcat recommends to dealers for purposes of trying to ensure that Bobcat's products are price-competitive and that dealers have the proper incentives to market and service the products in accordance with Bobcat's brand standards. Bobcat reserves the right to change suggested resale prices, product specifications, and options at any time. The final sales price is determined independently by the selling dealer in its sole discretion. Pricing is country specific. Bobcat's suggested list prices are for products sold in the US only.

*Offer ends 12/31/2023. Available at participating and eligible dealers only. Offer may vary by product type, series, model and select units in dealer's current inventory. Must take delivery from dealer stock by 12/31/2023. Offers available on new equipment in US and Canada only. Some restrictions apply. Length of contract and rate may vary. Monthly payment subject to change. Prior purchases not eligible. See dealer for details. Financing provided on approval of credit by authorized Bobcat finance providers to well-qualified buyers. All finance programs and rates are subject to final approval by the applicable Bobcat finance provider and are subject to change at any time without notice. Administrative fees may apply. Offer not available to government accounts, national accounts and municipal/utility bid customers. Bobcat Company reserves the right to extend or discontinue any of these programs at any time without prior notice.



WARNING: *This product can expose you to chemicals including engine exhaust (including diesel engine exhaust when equipped), lead and lead compounds, mineral oils, soots, phthalates, and carbon monoxide which are known to the State of California to cause cancer and birth defects or other reproductive harm. For more information go to www.P65Warnings.ca.gov.*

Certain specification(s) are based on engineering calculations and are not actual measurements. Specification(s) are provided for comparison purposes only and are subject to change without notice. Specification(s) for your individual equipment will vary based on normal variations in design, manufacturing, operating conditions, and other factors.