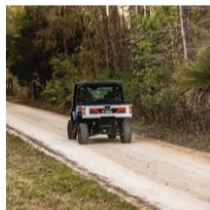


# UV34 Diesel

## Utility Vehicle



The diesel engine and tough chassis and suspension make the UV34 the most versatile part of your crew.

- Three-cylinder diesel engine
- High-output alternator, offering 140-amp peak
- Automatic glow plugs for cold-weather starting
- Cargo box holds up to 1,250 lbs
- 50+ accessories available

**Starting at \$20,924 USD\***

**Choose 0% financing for 24 months\* or a \$500 USD\*/\$650 CAD\* rebate in lieu of financing.**

[Search Inventory](#)

[Build & Quote](#)

[Contact Dealer](#)

[View Offers](#)

[Find Dealer](#)

[Download Brochure](#)

## UV34 Diesel Overview

- The Bobcat® 23.5-hp UV34 diesel UTV is designed to take on challenging projects, hauling materials and tools or towing heavy trailers and equipment.

- A three-cylinder diesel engine delivers a flatter horsepower and torque curve to offer the performance you demand. Because the engine is under 25 hp, it does not require a diesel particulate filter (DPF), which means no regeneration required.
- A high-output alternator is standard, offering a 140-amp peak to provide generous power for high-demand attachments, lights, radio, accessories, options and devices.
- Automatic glow plugs warm the engine for reliable cold weather starting.
- The large cargo box handles up to 1,250 pounds of material and retains its strength for years.
- The UV34 has what you need to tackle your toughest projects, including all-wheel drive, improved ground clearance, increased tow rating and convenient service access.

## UV34 Diesel Specs & Compare

UV34 Diesel Key Specifications
<b>UV34 Diesel</b>
<b>Operating Weight</b>
1,935 lb
<b>Travel Speed - Max</b>
35 mph
<b>Cargo Box Bed Load Capacity</b>
1,250 lb
<b>Total Vehicle Rated Capacity</b>
1,900 lb
<b>Turning Radius</b>
110 in
Engine
<b>UV34 Diesel</b>
<b>Emissions Tier (EPA)</b>
Tier 4
<b>Engine Cooling</b>
Liquid
<b>Engine Fuel</b>
Diesel
<b>Horsepower</b>
23.5 hp
<b>Displacement</b>
55 in <sup>3</sup>
Performance
<b>UV34 Diesel</b>
<b>Operating Weight</b>
1,935 lb
<b>Travel Speed</b>
35 mph
<b>Travel Speed - Max</b>
35 mph
<b>Travel Speed - Low</b>
16 mph
<b>Travel Speed - Reverse</b>
16 mph

## Capacities

### UV34 Diesel

#### Fuel Tank

11.5 gal

#### Cargo Box Bed Load Capacity

1,250 lb

#### Cargo Box Length

43.5 in

#### Cargo Box Width

54 in

#### Cargo Box Height

11.5 in

#### Cargo Box Bed Load Height

38 in

#### Total Vehicle Rated Capacity

1,900 lb

## Dimension

### UV34 Diesel

#### Length

123 in

#### Width

62 in

#### Height

76 in

#### Ground Clearance

11.7 in

#### Turning Radius

110 in

#### Wheelbase

85 in

## Features

### UV34 Diesel

#### Front and Rear Work Lights

Optional

#### Operating Lights

Standard

#### Cab Enclosure

Optional

#### Washer/Wiper (Front Rear and Roof)

Optional

#### Bed Lift

Manual

#### Cab Heater

Optional

#### Hydrostatic Transmission

Not Applicable

**Sound Option**

Not Applicable

**Tilt Steering Wheel**

Standard

**Spark Arrestor Muffler**

Standard

**Heater Air Conditioning**

Not Applicable

FEELBACK

## UV34 Diesel Features & Benefits

[Expand all](#)

▼ **Performance** 13

▼ **Comfort** 7

▼ **Uptime Protection** 5

▼ **Accessories** 1

## UV34 Diesel Attachments



2 Options Available

### Sand and Salt Spreader - UTV & Toolcat

Versatility for all types of material spreading jobs.

[View Attachment >](#)



3 Options Available

### Snow Blades - Utility Vehicles (UTV)

The heavy-duty V-blade for Bobcat® utility vehicles adjusts to all types of snow removal tasks, with several blade configurations and widths.

[View Attachment >](#)



# Related Models



## UV34 Gas

Total Vehicle Rated Capacity	1900 lb
Turning Radius	110 in
Travel Speed	35 mph

[View Model >](#)

## UV34 Diesel

Total Vehicle Rated Capacity	1900 lb
Turning Radius	110 in
Travel Speed	35 mph

[View Model >](#)

## UV34XL Diesel

Total Vehicle Rated Capacity	1900 lb
Turning Radius	110 in
Travel Speed	35 mph

[View Model >](#)



[View All Utility Vehicles >](#)

# Related Links

## UTV Accessories

[Audio & Tech >](#)

[Doors & Windows >](#)

[Electrical & Lighting >](#)

[Protection >](#)

[Racks & Storage >](#)

[Roofs >](#)

[Safety & Comfort >](#)

[Utility >](#)

[Wheels & Tires >](#)

## Parts & Service

[Buy Parts, Filters & More >](#)

[Service Schedules >](#)

[Manuals >](#)

[Warranty >](#)

[Parts Lookup >](#)

[Recalls >](#)

[Non-Current Models >](#)

\*The prices advertised are suggested resale prices that Bobcat recommends to dealers for purposes of trying to ensure that Bobcat's products are price-competitive and that dealers have the proper incentives to market and service the products in accordance with Bobcat's brand standards. Bobcat reserves the right to change suggested resale prices, product specifications, and options at any time. The final sales price is determined independently by the selling dealer in its sole discretion. Pricing is country specific. Bobcat's suggested list prices are for products sold in the US only. Product configuration may differ from image(s) provided. See dealer for full product details.

\*\*Offer ends 9/30/2024. Available at participating and eligible dealers only. Offer may vary by product type, series, model and select units in dealer's current inventory. Must take delivery from dealer stock by 9/30/2024. Offers available on new equipment in US and Canada only. Some restrictions apply. Length of contract and rate may vary. Monthly payment subject to change. Prior purchases not eligible. See dealer for details. Financing provided on approval of credit by authorized Bobcat finance providers to well-qualified buyers. All finance programs and rates are subject to final approval by the applicable Bobcat finance provider and are subject to change at any time without notice. Administrative fees may apply. Offer not available to government accounts, national accounts and municipal/utility bid customers. Bobcat Company reserves the right to extend or discontinue any of these programs at any time without prior notice.



**WARNING:** This product can expose you to chemicals including engine exhaust (including diesel engine exhaust when equipped), lead and lead compounds, mineral oils, soots, phthalates, and carbon monoxide which are known to the State of California to cause cancer and birth defects or other reproductive harm. For more information go to [www.P65Warnings.ca.gov](http://www.P65Warnings.ca.gov).

Certain specification(s) are based on engineering calculations and are not actual measurements. Specification(s) are provided for comparison purposes only and are subject to change without notice. Specification(s) for your individual equipment will vary based on normal variations in design, manufacturing, operating conditions, and other factors.

#### REGION SELECTOR

 NORTH AMERICA (EN)

#### EMAIL SIGN-UP

BUYING TOOLS

COMPANY

BUILD & QUOTE

ABOUT US

SEARCH INVENTORY

INNOVATION

FIND A DEALER

COMMUNITY

SPECIAL OFFERS

PEOPLE

REQUEST A DEMO

BOBCAT STORIES

CONTACT A DEALER

AMBASSADORS

BUYING RESOURCES

CONTACT US

LEGAL

CUSTOMER SERVICE

PRIVACY POLICY

WEBSITE FEEDBACK

TERMS & CONDITIONS

DEALER OPPORTUNITIES

RECALLS

GOVERNMENT SALES

FREQUENTLY ASKED QUESTIONS



**One Tough Animal.**

**DOOSAN**

Bobcat Company is a member of the Doosan Group. Doosan is a global leader in construction, grounds maintenance and material handling equipment, power and water solutions, and engineering that has proudly served customers and communities for more than a century.

Bobcat®, the Bobcat logo, the colors of the Bobcat machine and various other product names referenced on this website are trademarks of Bobcat Company in the United States and various other countries.

©2024 Bobcat Company. All rights reserved.